

BOLERO

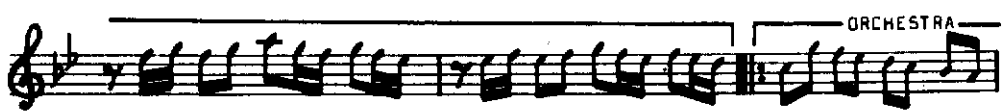


INTRODUCTION



USSAK

KAVAL SOLD



ORCHESTRA

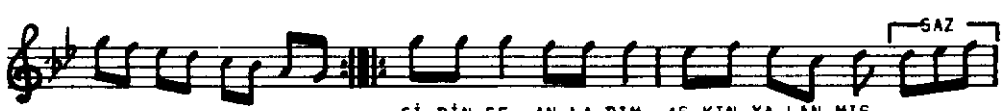


RİTM

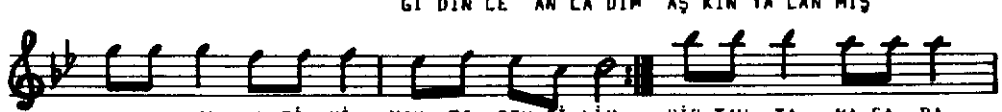
ARANAĞME



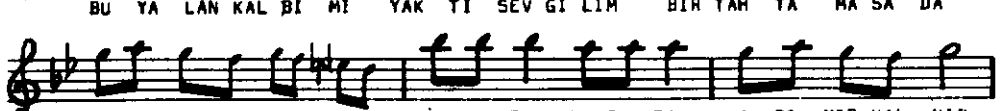
SAZ



Gİ DİN CE AN LA DIM AŞ KIN YA LAN MIŞ



BU YA LAN KAL Bİ Mİ YAK TI SEV Gİ LİM BİR TAH TA MA SA DA

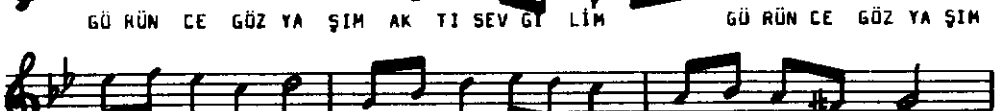


A DI MİZ KAL MIŞ..... BİR TAH TA MA SA DA A DI MİZ KAL MIŞ



SAZ

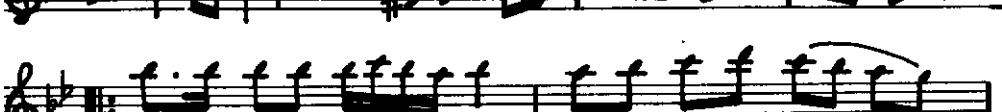
GÜ RÜN CE GÖZ YA ŞIM AK TI SEV Gİ LİM GÜ RÜN CE GÖZ YA ŞIM



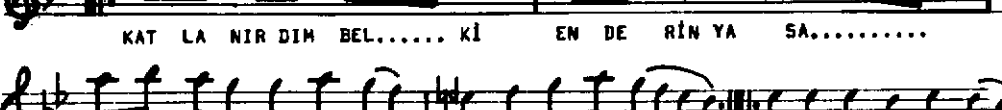
AK TI SEV Gİ LİM GÜ RÜN CE GÖZ YA ŞIM AK TI SEV Gİ LİM



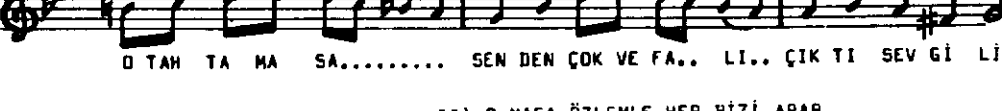
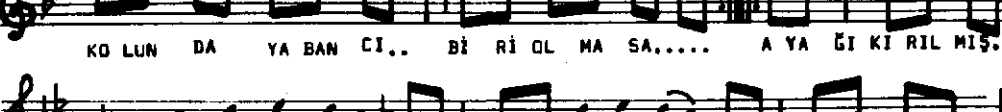
SAZ



KAT LA NIR DİM BEL..... Kİ EN DE RİN YA SA.....



KO LUN DA YA BAN CI.. Bİ Rİ OL MA SA.... A YA Ğİ Kİ RİL MIŞ..



O TAH TA MA SA..... SEN DEN ÇOK VE FA.. LI.. ÇIK TI SEV Gİ LİM

TURHAN
TAŞAN
30 Haziran 1980

I) GİDİNCE ANLADIM AŞKIN YALANMIŞ
BU YALAN KALBİMİ YAKTI SEVGİLİM
BİR TAHTA MASADA ADIMIZ KALMIŞ
GÖRÜNCE GÖZYAŞIM AKTI SEVGİLİM

II) O MASA ÖZLEMLE HEP BİZİ ARAR
ÜSTÜNDE BİNLERÇE ANILAR SAKLAR
SENSİZ GİDEMEDİM GEÇTİ HAFTALAR
MASAMIZ ARTIK BOŞ KALDI SEVGİLİM

NAKARAT: KATLANIRDIM BELKİ EN DERİN YASA
KOLUNDA YABANCI BİRİ OLMASA
AYAĞI KIRILMIŞ O TAHTA MASA
SENDEN ÇOK VEFALİ ÇIKTI SEVGİLİM.
AHMET SELÇUK İLKAN